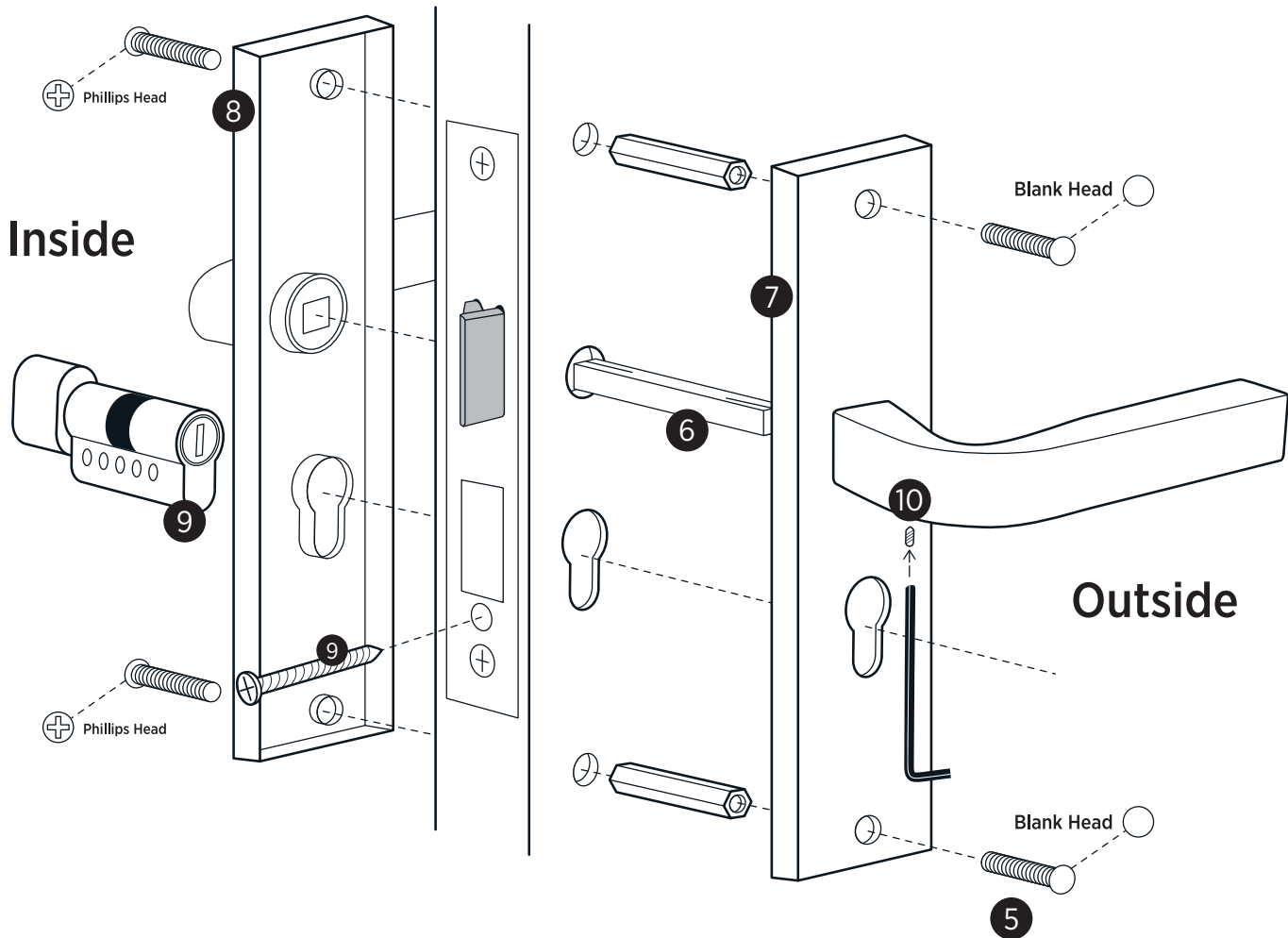
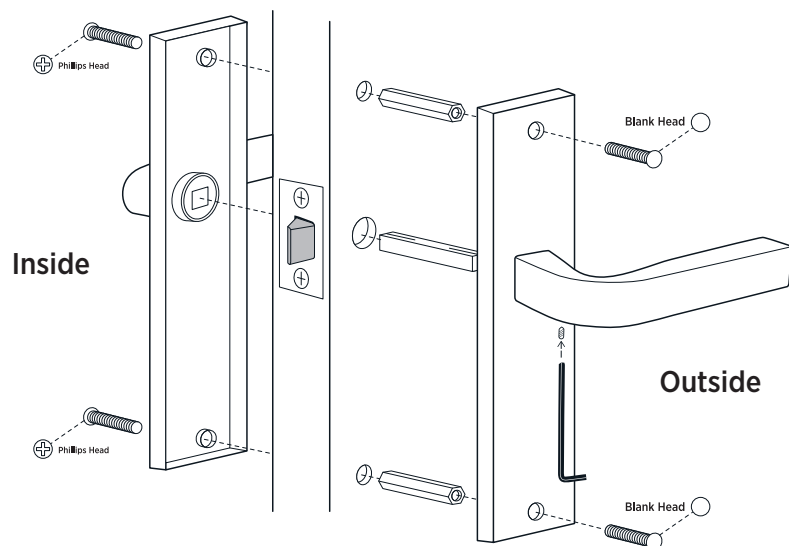


EURO CYLINDER



1. Install latch/lock into the door as per instructions
2. Measure backset of lock/latch by measuring the distance from the door face to the lock spindle hole.
3. Using the drilling template supplied, mark out, and drill holes for your handle.
4. Decide on door handing
5. Fit blank head screws to the outside door handle and install hex posts by tightening with a spanner.
6. Insert the spindle into the outside door handle with split aligned vertically.
7. Slide outside door handle onto door.
8. Align inside handle and install onto door fastening with Phillips head screws provided (cutting with hacksaw may be required due to door thickness).
9. If required install cylinder into mortice lock and retain by using supplied screw into foreend.
10. Secure handles to installed spindle with grub screws.

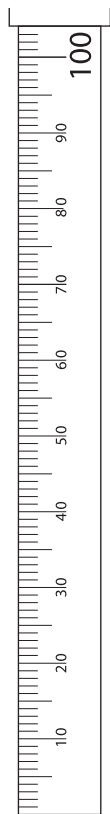
UNPUNCHED



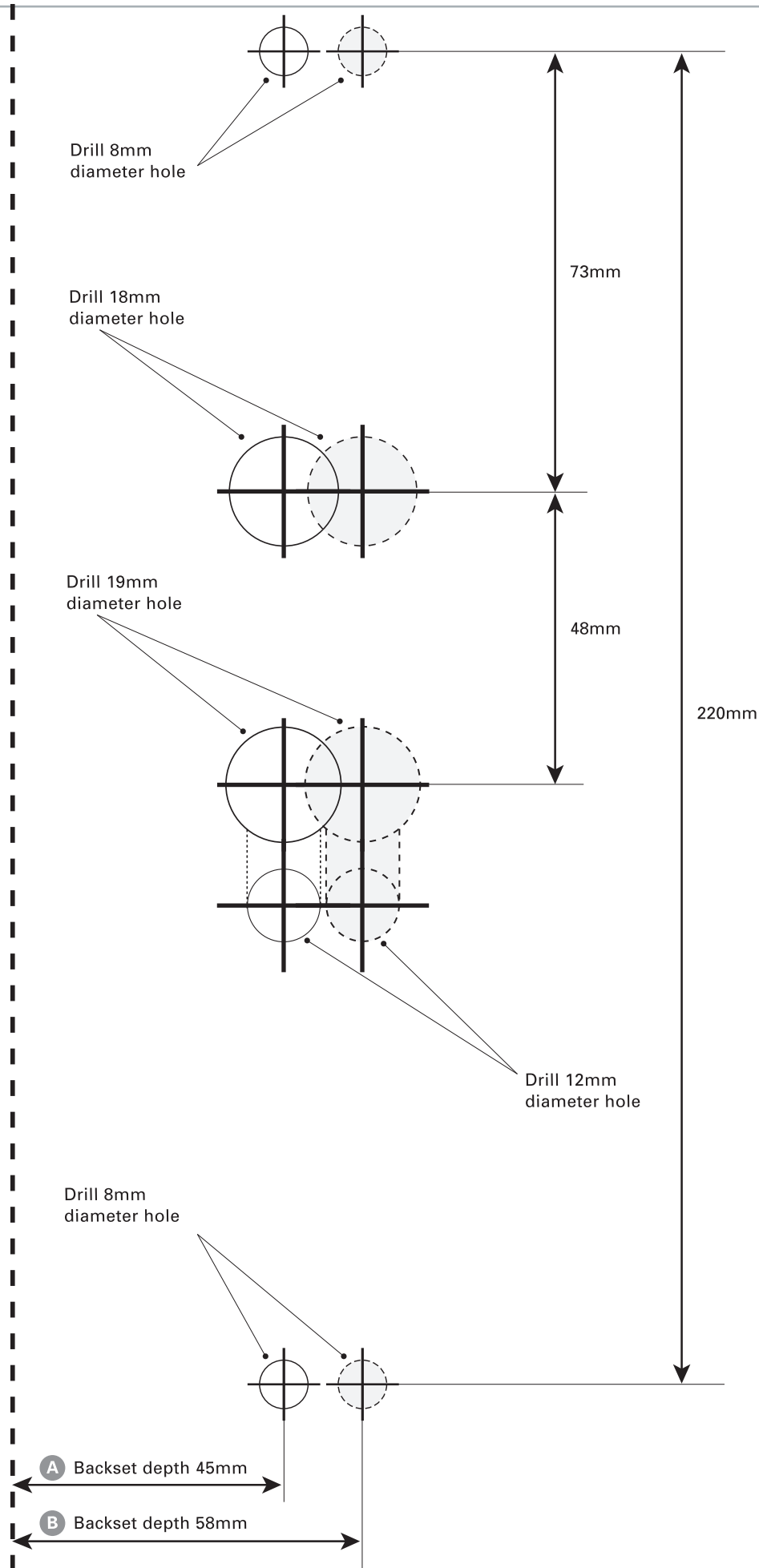
Bend template on this line →

Note: Drill 1x set of holes, either for:

- A 45mm backset = ○
- B 58mm backset = ○





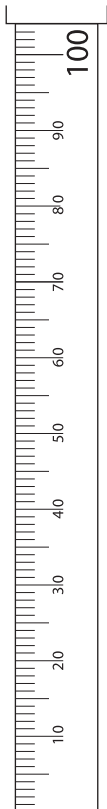
Note: If reprinting this template, ensure you print 1:1 ratio, and double check the drilling template with an accurate ruler.



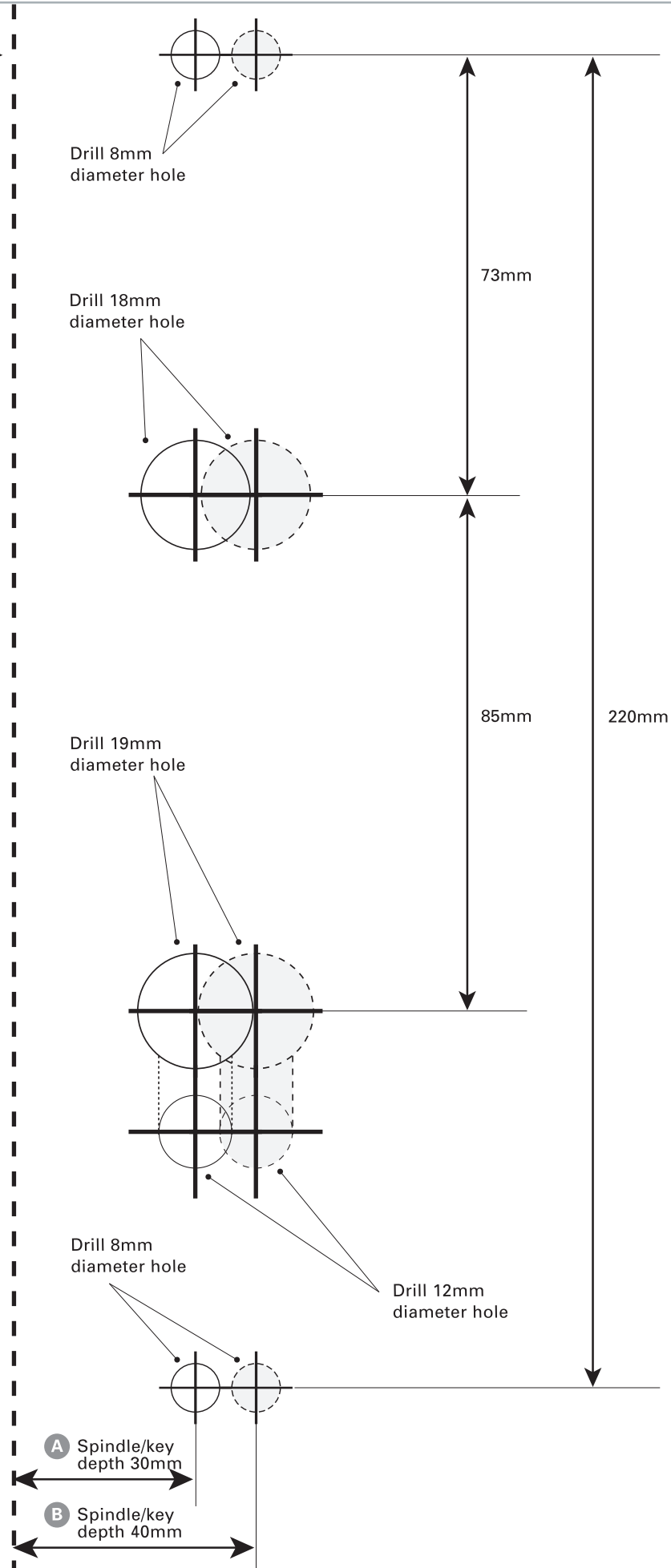
Bend template on this line →

Note: Drill 1x set of holes, either for:

- A 30mm spindle/key = 
- B 40mm spindle/key = 





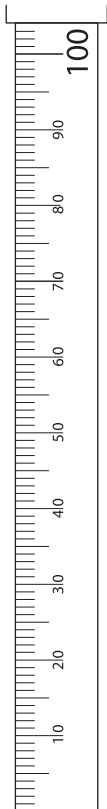
Note: If reprinting this template, ensure you print 1:1 ratio, and double check the drilling template with an accurate ruler.



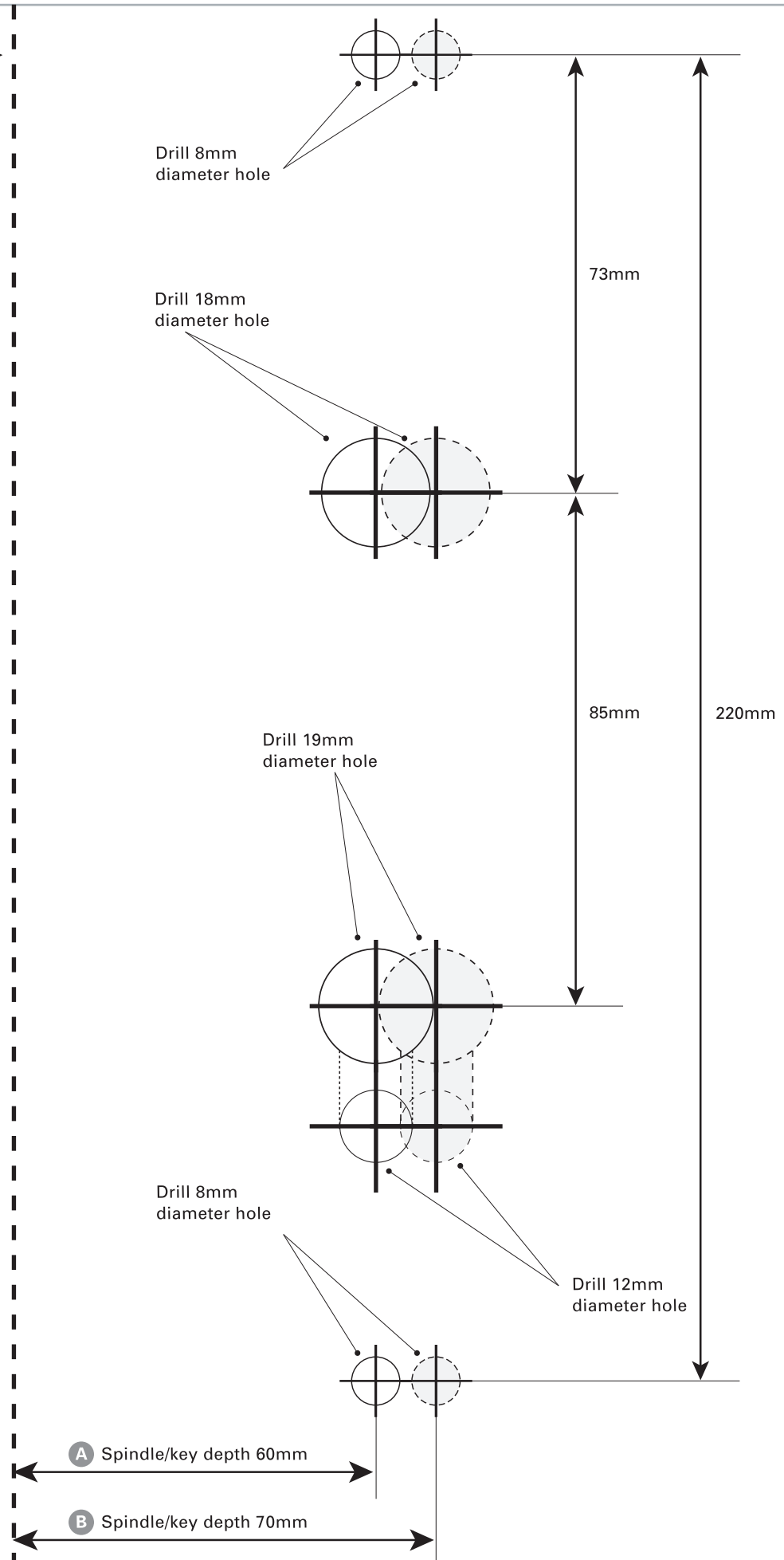
Bend template on this line →

Note: Drill 1x set of holes, either for:

- A** 60mm spindle/key = 
- B** 70mm spindle/key = 





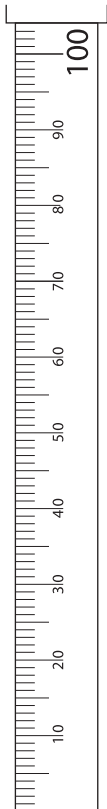
Note: If reprinting this template, ensure you print 1:1 ratio, and double check the drilling template with an accurate ruler.



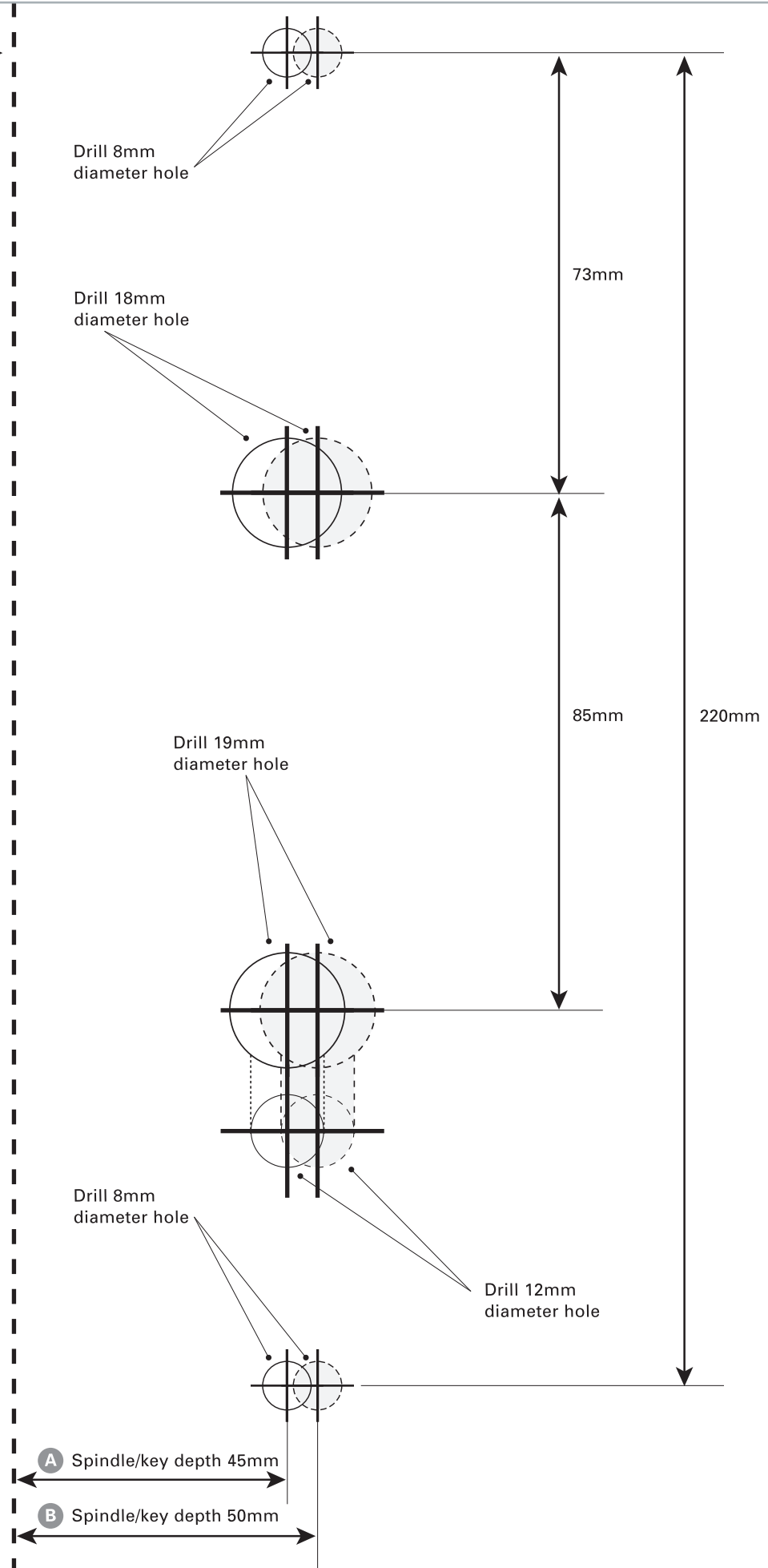
Bend template on this line →

Note: Drill 1x set of holes, either for:

- A 45mm spindle/key = 
- B 50mm spindle/key = 





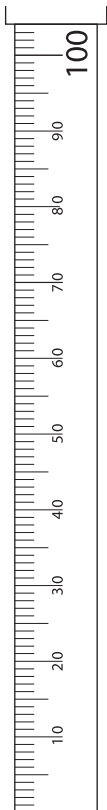
Note: If reprinting this template, ensure you print 1:1 ratio, and double check the drilling template with an accurate ruler.



Bend template on this line →

Note: Drill 1x set of holes, either for:

- A 60mm backset = 
- B 70mm backset = 



Note: If reprinting this template, ensure you print 1:1 ratio, and double check the drilling template with an accurate ruler.

Drill 8mm diameter hole

Drill 18mm diameter hole

Drill 8mm diameter hole

73mm

220mm

A Backset depth 60mm

B Backset depth 70mm