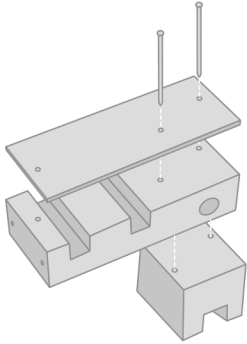


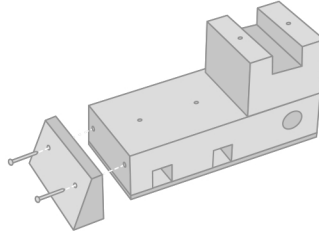


BUILD YOUR OWN WOODEN TRAIN INSTRUCTIONS

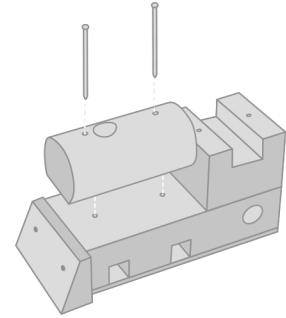
CAUTION: Kit contains components with functional sharp points. Adult supervision required. Please dispose of any components if they become damaged after assembly. Use safety goggles at all times. Small parts: not suitable for children under three years.



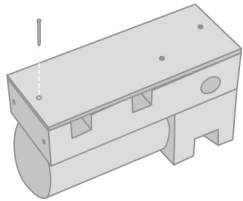
1. Attach the bottom panel and driving cab to the main body by using x2 long nails.



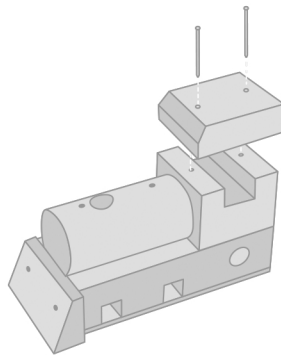
2. Attach the bumper to the main body by using x2 short nails.



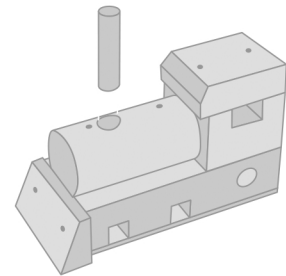
3. Fasten the fire chamber to the main body by using x2 long nails.



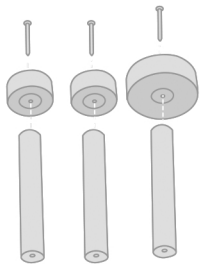
4. Fasten the bottom panel and the train body together with x1 short nail.



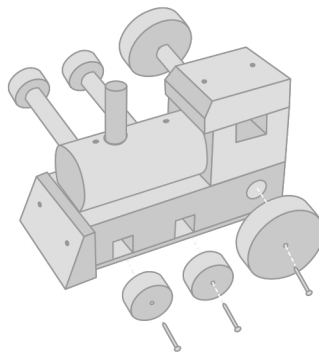
5. Fasten the cab roof together with the driving cab by using x2 long nails.



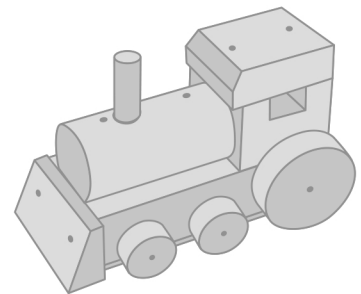
6. Fix the funnel into the pre-drilled conical hole in fire chamber and hammer the end of funnel to fix it.



7. Attach one wheel to one side of each axle by using a short nail.



8. Fix each axle with wheel combination into the pre-drilled axle hole, and then attach the other wheel to each axle with one short nail.



FINAL: To decorate, place stickers provided on relevant areas of the completed train.