

INCLUDES:

1. Main lock case
2. Indoor lock case
3. Seals
4. Spindle
5. Latch
6. Keeper
7. Latch support holder
8. Fixing screws for lock cases
9. Fixing screws for keeper & latch
10. Screwdriver
11. Factory preset code card
12. Fixing bolt for lock cases

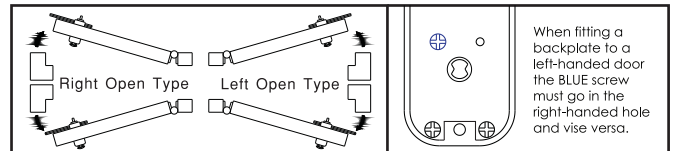
SPECIAL NOTES BEFORE INSTALLATION:

Before commencing installation check that all parts are working correctly.

- Enter the factory preset code (please refer to factory preset code card), turn handle in both directions. The handle should turn and return freely under its own return spring.
 - Check that the spring latch and spindle hub moves freely.
 - Please press button C before input password.
- If you intend to change the code, you should do it before installing the lock. SEE THE CODE CHANGE INSTRUCTIONS.

1. IDENTIFYING IF YOUR DOOR IS LEFT HANDED OR RIGHT HANDED

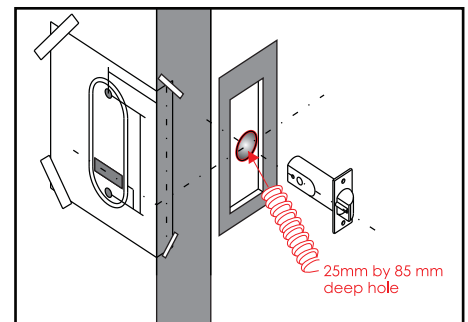
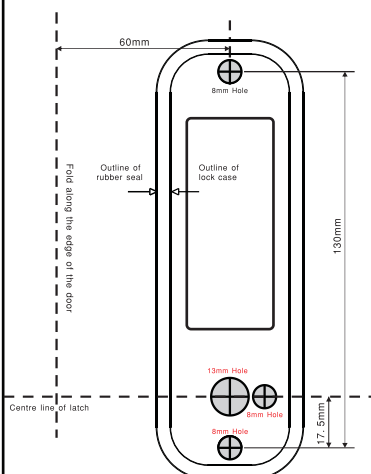
View from outside, If the door hinges are on your right, it is right-handed door, if the door hinges are on your left, it is left-handed door.



2. INSTALL DOOR HANDLE

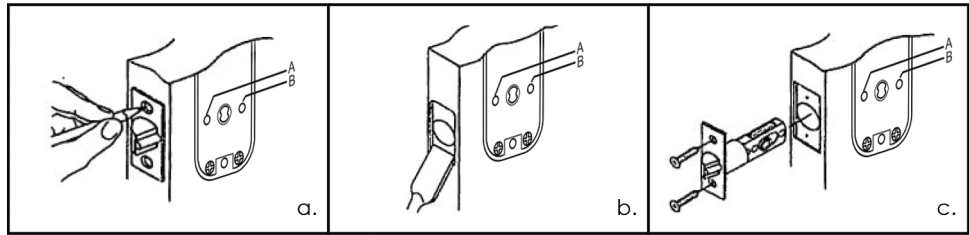
A. PREPARE DOOR & DRILL HOLES

- a. Select desired position on the door. Fold the template on the dotted distance 60mm back set line to suit the deadlatch assembly supplied. Tape the template to the door.
- b. Mark and drill holes as shown on template (please refer to the left diagrams, 8mm & 13mm holes).
- c. Pre-drill dia. 25mm by 85mm deep hole to insert the latch.



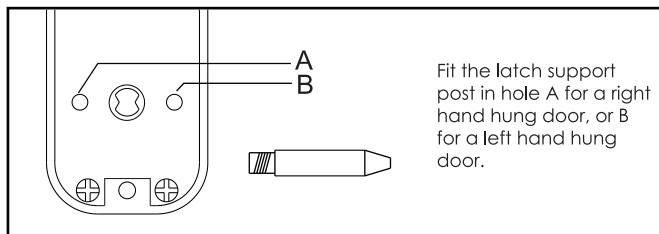
B. INSTALL LATCH

- a. Insert latch in hole with right direction according to actual situation.
Keeping it parallel to door face, mark outline of latch face and screw holes. Remove latch.
- b. Chisel a 3mm deep rebate or until the latch face is flush with the door edge.
- c. Post and fix the latch with screws on the door edge.

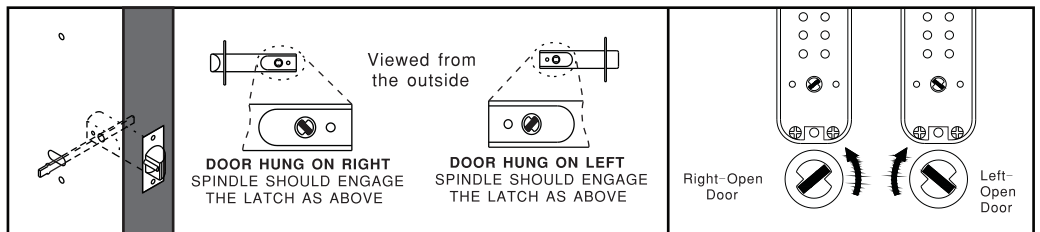


C. INSTALL LOCK

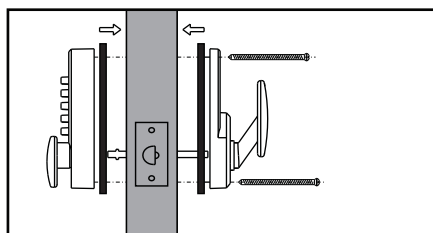
- a. Fit rubber seal to the back of the lock cases.
- b. Screw in the fixing bolt to the back of main lock case.
- c. Screw in the latch support holder on the back of the main lock case (please refer to the following diagram to find out correct position).



- d. Insert the spindle through the latch and connect with both lock cases.
- NOTE:** Make sure spindle could operate the latch with correct door hand direction, and also match the back of the knob holes (please refer to the following diagrams).

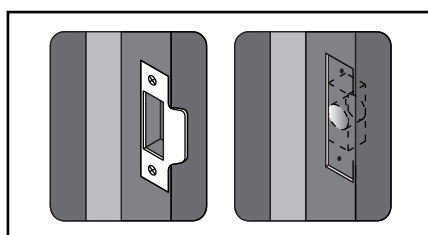


- e. Connect the lock cases with screws (please refer to the following diagram).
- f. Before tighten the screws please make sure the knobs and latch are running good.



D. INSTALL STRIKE

- a. Position the keeper on the frame so that it lines up with the latch and mark the appropriate hole.
- b. The keeper will require cutting a recess to stay the latch when the door is closed (please refer to the diagram).



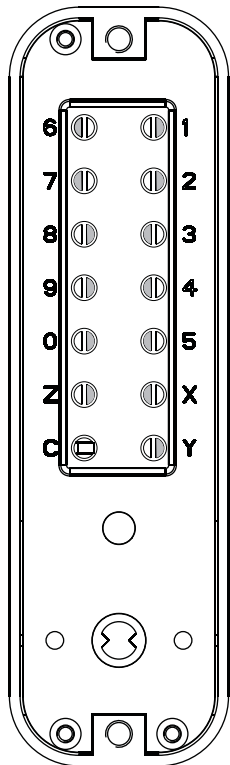
- c. Mortise 1mm deep to accept the keeper faceplate.
- d. Post and fix the keeper with screws on the frame.

3. HOW TO CHANGE CODE

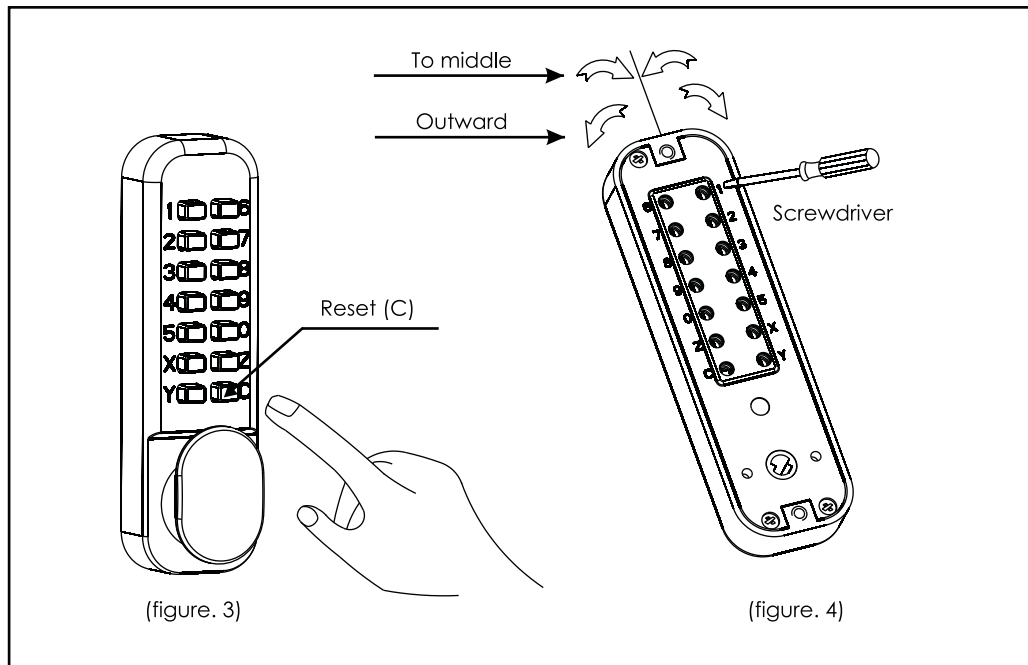
A. CHANGE THE PASSWORD KEYS

Press the reset button C on the key pad first to release all the keys (please refer to the figure. 3), then insert the screwdriver into the slot of the key holes and turn 180° to the end (please refer to the figure. 4). For example, to change password (45X90) to a new one (1267Y), press the reset button C to release all the keys, then insert the screwdriver into the slot of the key holes and turn (45X90) keys by 180° to the middle in order to change the password keys to common keys, then turn (1267Y) keys to outward by 180° as a new password keys (please refer to figure. 5), all the above operation is completed, press the new password button on the key pad and turn the knob to check whether the latch works correctly, the password is changed successful.

Example
(1267Y)



(figure. 5)

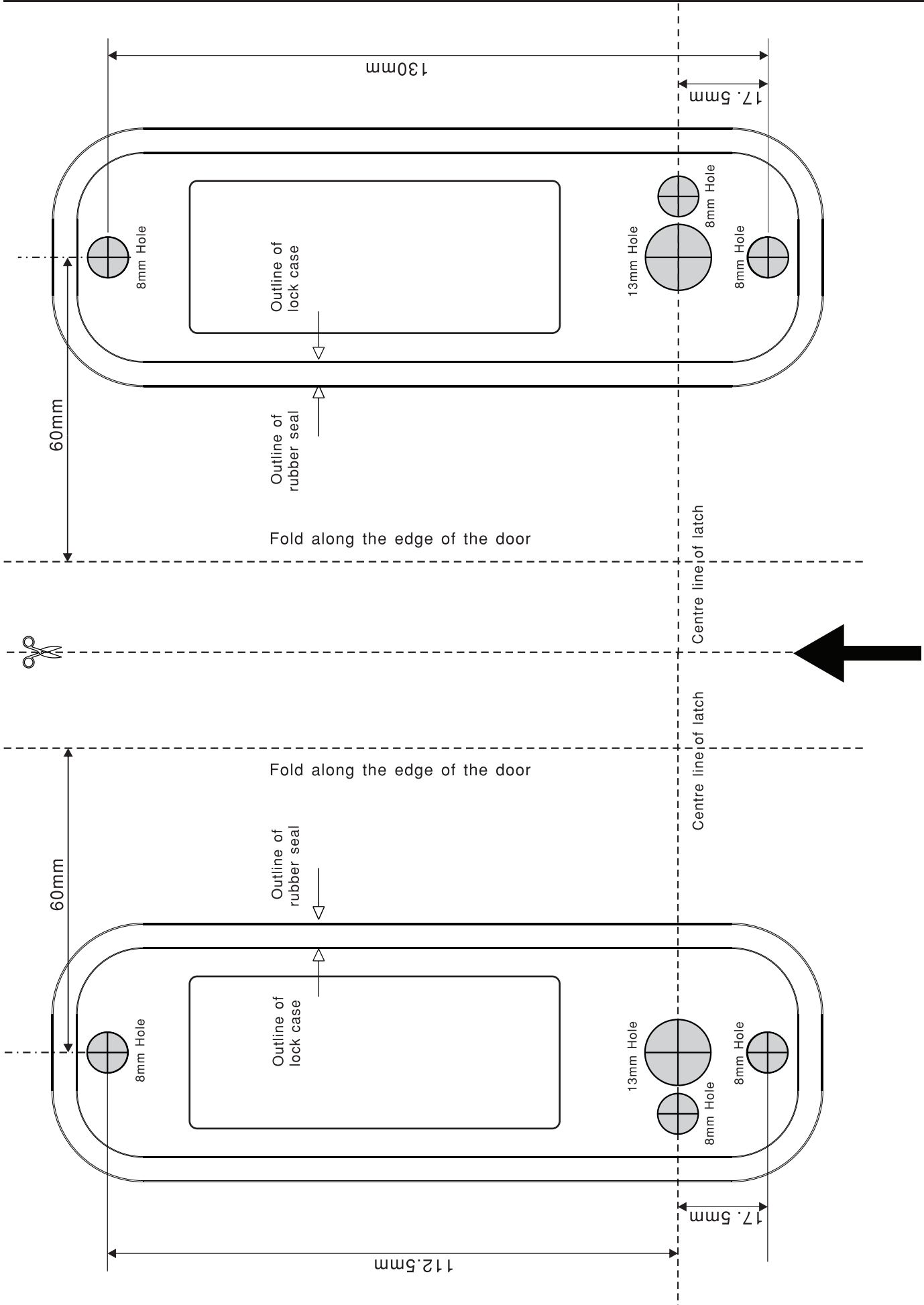


(figure. 3)

(figure. 4)

NOTES:

- Do not press any buttons while changing the password.
- The password can be set to 1-13 figures, but 5-6 figures should be the best combination.
- Refer to Fig. 5, the password keys are 1267Y.



NOTE: Mark and drill holes as shown on template.