

Goldair™



Operating Instructions

Fibre Panel Heater with Timer & Thermostat Control



Model: GFP220

General Care and Safety Guide

YOUR SAFETY IS IMPORTANT TO US. PLEASE ENSURE YOU TAKE NOTE OF THE INSTRUCTIONS AND WARNINGS OUTLINED IN THIS MANUAL.

CAUTION: In order to avoid a hazard due to inadvertent resetting of the thermal cut-out, this appliance must not be supplied through an external switching device, such as a timer, or connected to a circuit that is regularly switched on and off by the utility.

- This appliance is not intended for use by persons (including children) with reduced physical, sensory or mental capabilities or lack of experience and knowledge, unless they are supervised or have been given instruction concerning the use of the appliance by a person responsible for their safety.
- Children should be supervised to ensure that they do not play with the appliance.
- If the supply cord is damaged, it must be replaced by the manufacturer, its service agent or similarly qualified persons in order to avoid a hazard.

WARNING: You must not cover this appliance. Covering this appliance presents fire risk and will activate the safety fuse; permanently disabling the unit.

WARNING: Do not use this appliance in small rooms when they are occupied by persons not capable of leaving the room on their own, unless constant supervision is provided.

WARNING: To reduce the risk of fire, keep textiles, curtains, or any flammable material a minimum distance of 300mm from the air outlet.

- Use only the voltage specified on the rating label of the appliance.
- Keep all objects at least 1 metre from the front and 300mm from the sides of the appliance.
- The heater must not be located immediately below a socket outlet.
- This appliance is intended for household use only and not for commercial or industrial use.
- Indoor use only.
- Use this appliance only as described in this manual. Any other use is not recommended by the manufacturer and may cause fire, electric shock or injury.
- Do not use the appliance if it has been dropped or damaged.
- The common cause of overheating is deposits of dust or fluff in the appliance. Ensure these deposits are removed regularly by unplugging the appliance and vacuum cleaning the air vents and grills.

General Care and Safety Guide

- Never use the appliance to dry clothes.
- Always unplug appliance when not in use.
- When the appliance has been unpacked, check it for transport damage and ensure all parts have been delivered. If parts are missing or the appliance has been damaged, contact the Customer Services Team.
- Do not use if there are visible signs of damage to the appliance.
- Do not connect the appliance to mains supply until completely assembled and adjusted.
- Ensure hands are dry before handling the plug or main unit.
- Ensure appliance is on a flat, stable, heat-resistant surface.
- Do not operate with cord set coiled up as a heat build up is likely, which could be sufficient to become a hazard.
- Carry out regular checks of the supply cord to ensure no damage is evident
- Do not operate this appliance with a damaged cord, plug or after the appliance malfunctions or has been dropped or damaged in any manner. Take to a qualified electrical person for examination, electrical service or repair.
- Do not twist, kink or wrap the cord around the appliance, as this may cause the insulation to weaken and split. Always ensure that all cord has been removed from any cord storage area and is unrolled before use.
- It is recommended that this appliance is plugged directly into the wall socket. Power boards are not rated to supply power to high wattage appliances.
- A correctly specified, undamaged extension cord may be used with this appliance provided it is used in a safe manner.
- Do not remove plug from power socket until the appliance has been switched off.
- Do not remove plug from power socket by pulling cord; always grip plug.
- Don't place appliance on bedding or on thick & long carpet where the openings may get blocked.
- Switch off and use handle provided when moving
- Do not place appliance close to radiant heat source.
- Do not insert or allow foreign objects to enter any ventilation or exhaust opening, as this may cause an electric shock, fire or damage to the appliance.
- Do not sit on the appliance.
- Do not use abrasive cleaning products on this appliance. Clean with a damp cloth (not wet) rinsed in hot soapy water only. Always remove plug from the mains supply before cleaning.
- Do not operate in areas where petrol, paint or other flammable liquids are used or stored.
- Do not use this appliance in the immediate surrounds of a bath, a shower, or a swimming pool or other liquids.

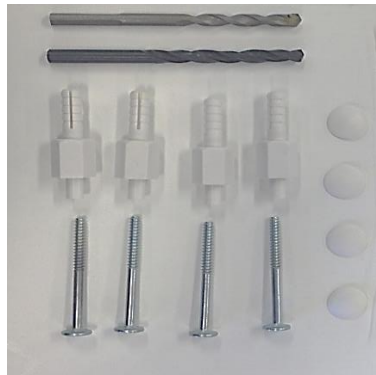
General Care and Safety Guide

- The appliance must not be immersed in any liquids.
- There are no user serviceable parts installed in the unit.
- Do not place the unit in wardrobes or other enclosed spaces as this may cause fire hazards.
- This unit is not supposed to be used in or around locations where foodstuffs, works of art or delicate articles of science, etc. are stored.
- If your appliance does not work, or is not working properly, contact the place of purchase or the Customer Services Team.

Components



Heater x 1



Screw pack components

Drill bits x 2

(1 x 7mm for plasterboard or wooden walls,
1 x 8mm for masonry walls)

Mounting Plugs x 4

Screws x 4

Screw Caps x 4

Wall Mounting & Position Instructions

Always choose a safe location for the heater, keeping in mind the safety precautions outlined below. The heater needs to be mounted so that the power switch is in the top right hand corner. Do not run the power cord behind the heater. This will determine where you mount the heater in relation to where the power socket is located.

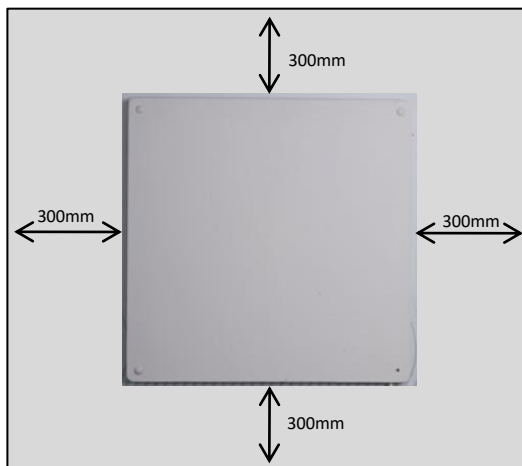
NOTE: Your Goldair Fibre Panel Heater should be installed with at least 300mm clearance from the floor and any other surrounding parts including other appliances, side walls, ceilings, shelves and soft furnishings.

HEATER MUST NOT BE LOCATED IN FRONT OF A SOCKET OUTLET

DO NOT RUN THE POWER CORD BEHIND THE HEATER

WALL MOUNTED HEATERS ARE ONLY TO BE MOUNTED ON WALLS THAT COMPLY WITH CURRENT AS/NZS SPECIFICATIONS & BUILDING REGULATIONS

MAKE SURE THE APPLIANCE IS UNPLUGGED AND POWER SWITCHES ARE OFF



Wall Mounting & Position Instructions

The appliance must not be located immediately below a socket outlet.

The panel heater must be mounted on the wall with the power switch in the top right hand position as shown below.



Note: Do not run power cord behind the heater.

Note: **DO NOT REMOVE** the DO NOT COVER sticker from the front of the heater even if you are going to paint the heater.

there is a legal requirement for the DO NOT COVER words to be visible on the heater.

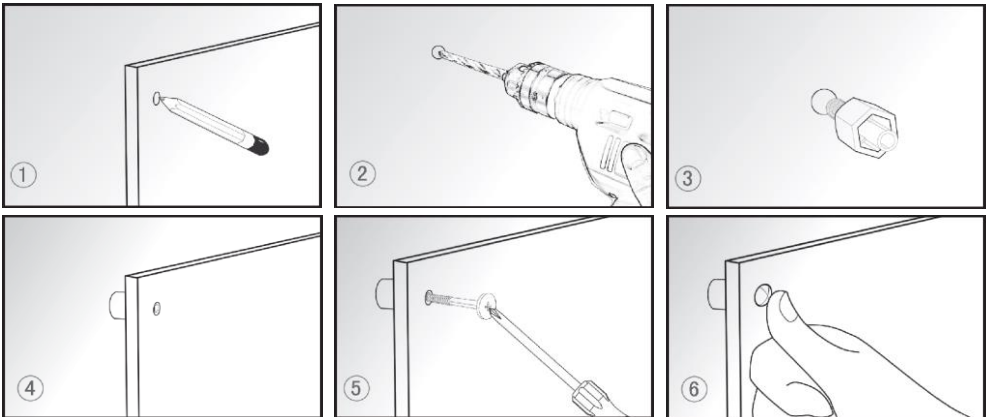
Removing the sticker will result in some of the surface coating of the heater coming off with the sticker. This will NOT be covered by warranty.

Wall Mounting & Position Instructions cont.

NOTE: Your Panel Heater should be installed with at least 300mm clearance from the floor and any other surrounding parts including other appliances, side walls, ceilings, shelves and soft furnishings.

1. Mark the positions of the four holes to be drilled on the wall. Ensure there is a 300mm clearance on all sides of the heater.
2. Drill holes with an appropriate drill bit for the wall surface you are mounting the heater on to.
3. Insert the plastic wall plugs into the holes.
4. Install the panel heater onto the 4 wall plugs matching the 4 holes on the heater.
5. Screw the 4 screws into the plastic wall plugs.
6. Put the caps onto the end of the screws. It is recommended to use some normal glue to stick the caps onto the screw heads.

To remove the unit from the wall, simply remove the screw caps, unscrew the screws and take the heater down.



Operating Your Heater

Always choose a safe location for the heater, keeping in mind the safety precautions outlined. Ensure all packaging has been removed from the unit before use. Please follow the below instructions.

WARNING: In order to avoid overheating or fire, do not cover the heater.

WARNING: Keep all objects at least 1 metre from the front and 300mm from the sides of the appliance.

WARNING: Do not use this heater with a programmer, separate timer, remote-control system or any other device that switches the heater on automatically, since a fire risk exists if the heater is covered or positioned incorrectly.

WARNING: Never leave this heater unattended when in use.

WALL MOUNTED HEATERS ARE ONLY TO BE MOUNTED ON WALLS THAT COMPLY WITH CURRENT AS/NZS SPECIFICATIONS & BUILDING REGULATIONS

Note: Do not run power cord behind the heater.

Once the heater is in a safe operating position and all switches are in the off position, insert the power plug into the mains outlet and switch on.

CAUTION: Ensure the power cord is not tight because if pulled it may partially pull the plug from the socket. A partially inserted plug will overheat the plug and socket and could result in fire.

Operating Your Heater

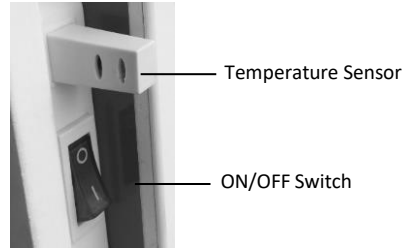
Your Panel Heater will provide background warmth. This Panel Heater is designed to take the chill off the room.

The surface of this Panel Heater can be painted with good quality paint (acrylic or enamel).

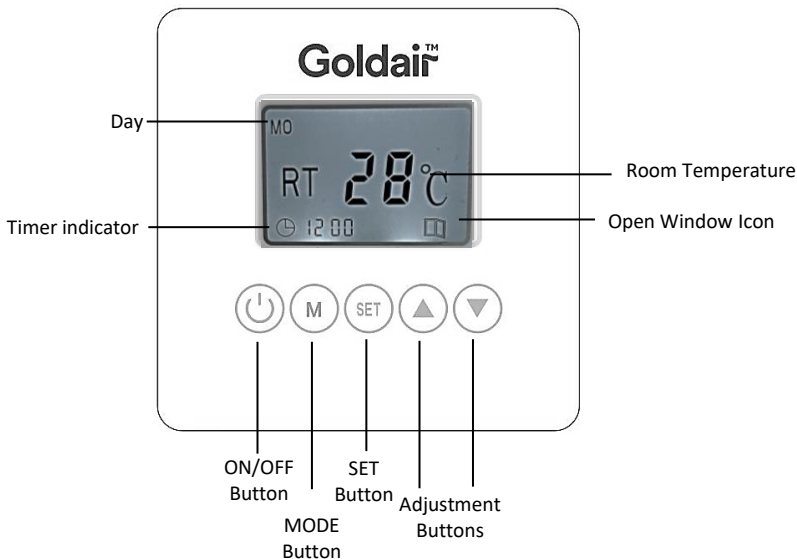
Decorating tip: All wall mounted heaters may cause paint to discolour or wallpaper to lift.

OPERATING INSTRUCTIONS

- Before plugging in and using your new Goldair panel heater, check all surfaces to ensure the heater is not damaged in any way.
- Check that the On/Off switch is set to the Off
- Position before plugging the heater into the mains supply.
- Pull the temperature sensor above the power switch out as far as it will go (approx. 25mm).



Use the On/Off switch on the side of the heater to turn your heater on. The OF/ON indicator on the lower left corner of the LCD screen will show the heater is in standby mode. The screen will also display the room temperature. The ECO indicator will also be displayed showing that the heater is in the default setting for best economy. The current ambient room temperature (RT) will also be displayed.



Operating Your Heater

Press the ON/OFF button on the display panel once and the LCD display will show the current room temperature.

Setting the Current Time and Day of the Week

With the heater turned on, press the SET button for 3 seconds the hour symbol will flash, press Δ or ∇ to set the hour from 01-23 and then press SET, the minute symbol will flash, press Δ or ∇ to set the minute from 00-59 then press SET, the Day symbol will flash, press Δ or ∇ to set the day of the week from MO - SU, then press SET to save or if you wait 10 seconds it will automatically save.

Setting the Mode

Press M to select normal mode or weekly mode setting, if using in normal mode, the heater works without using the timer.

Setting Temperature

Press M, the heater will be in default heating setting 25°C under normal mode, press the SET button and the temperature LCD will flash. Press Δ or ∇ to set your desired temperature from 0 to 37 degrees Celsius. Press SET to save or wait 10 seconds and will automatically save.

Suggestion: to find your preferred heat setting, set the temperature to the maximum setting. When the room reaches a temperature you are comfortable with, check the room temperature reading on the display and then set the heater to this temperature. The heater will now cycle on and off to maintain this set temperature.

Setting the Timer

NOTE: Each day is a separate 24 hour period. If you want a timer period to cross over midnight, you will need to set 2 timer periods per day.

E.g. On at 17:00 and off at 07:00

Set an ON time at 00:01 (1 minute past midnight) and OFF at 07:00 and another that is ON at 17:00 and OFF at 23:59. This creates 2 cycles in a DAY period.

Press the M button select the day of the week (MO - SU) the clock symbol will display in the left corner of the screen, press SET, the temperature symbol will flash, press Δ or ∇ to set the temperature you want the heater to turn on at and press SET.

The ON symbol will show to start timer setting, the hour symbol will flash, set the timer start hour, press Δ or ∇ to select the start hour you want the heater to turn on at, press SET the minute symbol will flash, set the timer on minute. Press SET, the screen will change to OFF.

To set the timer off timer, Press SET the hour will flash, set the stop hour by pressing the Δ or ∇ then press SET, the minute symbol will flash, set the stop minute by pressing the Δ or ∇ then press SET.

The stop time must later than start time.

Operating Your Heater

Open Window Function



The heater has a function to stop heating if the temperature suddenly drops by 3 degrees. It will think that maybe a window has been opened and will stop heating and display the Open Window symbol. If this happens, check why the temperature has dropped so quickly. You will need to start the heater again to reset.

When the product leaves the factory, the window function is on by default.

If you want to cancel the window function, press and hold the ∇ button for 5 seconds. Once the heater makes a BEEP sound release the ∇ button, and the open window symbol in the lower right corner of the display screen will go out, and the window opening function is successfully cancelled.

To restore the window function, press and hold the \triangle for 5 seconds. Once the heater makes a CLICK sound, release the \triangle key and the open window symbol will reappear in the lower right corner of the display screen.

Operating Your Heater

SAFETY DEVICES

This appliance has two protection devices:

- Resettable Thermal Links - this will automatically disconnect the power to the appliance at a pre-set overheat temperature. After cooling down it will reset and power on again. If this occurs, investigate what is causing the appliance to overheat.
- Thermal Fuse - this disconnects the appliance permanently in case of overheating. (It is non resettable).

CAUTION: The appliance generates heat during use. Precautions must be taken to prevent the risk of burns, scalds, fires or other damage to persons.

CARE AND CLEANING

- The heater requires regular cleaning to ensure trouble free operation:
- Unplug the heater from the mains supply before cleaning.
- Ensure that the heater has been allowed to cool down completely before cleaning.
- Use a damp cloth (not wet) to wipe the exterior of the heater to remove dust and dirt.
- Never use solutions such as petrol, thinners or polishing agents.
- Ensure the heater is dry before plugging back into the mains supply.
- Do not attempt to dismantle the heater.
- There are no user serviceable parts. For service or repair, contact an authorised electrical service technician.

Goldair™



Model No: GFP220

Supply: 230-240VAC 50Hz

Wattage: 400-425W

Approval: GMA-517223-EA

QC Passed: PO#-WWYY

MADE IN CHINA

CUSTOMER SUPPORT

NEW ZEALAND PH: 0800 232 633

AUSTRALIA PH: 1300 465 324

PROOF OF PURCHASE

To receive warranty retain receipt as proof of purchase.

Goldair™

SUPPORT AND TECHNICAL ADVICE

Goldair – New Zealand

Monday – Friday 8am-5pm

Phone +64 (0)9 917 4000

Phone 0800 232 633

info@cdb.co.nz

Goldair – Australia

Monday – Friday 8am-5pm

Phone +61 (0)3 9365 5100

Phone 1300 465 324

info@cdbgoldair.com.au



Three Year Warranty

Thank you for purchasing this Goldair product. Your product is warranted against faults and manufacture when used in normal domestic use for a period of **three years**. In non-domestic use Goldair limits the voluntary warranty to **three months**.

Goldair undertake to repair or replace this product at no charge if found to be defective due to a manufacturing fault during the warranty period.

This warranty excludes damage caused by misuse, neglect, shipping accident, incorrect installation, or work carried out by anyone other than a qualified electrical service technician.

PLEASE KEEP YOUR RECEIPT AS THIS WILL HELP VERIFY YOUR WARRANTY.

The benefits given to you by this warranty are in addition to other rights and remedies available to you under law in relation to the goods or services to which this warranty relates.

In Australia, our goods come with guarantees that cannot be excluded under the Australian Consumer Law. You are entitled to a replacement or refund for a major failure and compensation for any other reasonably foreseeable loss or damage. You are also entitled to have the goods repaired or replaced if the goods fail to be of acceptable quality and the failure does not amount to a major failure.

In New Zealand this warranty is additional to the conditions and guarantees of the Consumers Guarantee Act (1993).

Goldair – New Zealand

CDB Goldair
PO Box 100-707
N.S.M.C
Auckland

Phone +64 (0)9 917 4000
Phone 0800 232 633
www.goldair.co.nz

Goldair – Australia

CDB Goldair Australia Pty
PO Box 574
South Morang
Victoria, 3752

Phone +61 (0)3 9365 5100
Phone 1300 GOLDAIR (1300 465 324)
www.goldair.com.au

Goldair Three Year Warranty (IMPORTANT: Please complete and retain this warranty card)

Name _____

Address _____

Place Of Purchase _____ Date of Purchase _____

Name Of Product _____ Model Number _____

Attach a copy of the purchase receipt to this warranty card

Goldair™



CDB  Goldair™

New Zealand
PO Box 100707,
North Shore Mail Centre,
Auckland, 0745
www.goldair.co.nz

Australia
PO Box 574,
South Morang,
Victoria, 3752
www.goldair.com.au