

NUMBER

Good to Go.

8[®]

Convactor Panel Heater

OPERATING INSTRUCTIONS



Model: N8PH50

General Care and Safety Guide

YOUR SAFETY IS IMPORTANT TO US. PLEASE ENSURE YOU TAKE NOTE OF THE INSTRUCTIONS AND WARNINGS OUTLINED IN THIS MANUAL.

CAUTION: In order to avoid a hazard due to inadvertent resetting of the thermal cut-out, this appliance must not be supplied through an external switching device, such as a timer, or connected to a circuit that is regularly switched on and off by the utility.

- This appliance is not intended for use by persons (including children) with reduced physical, sensory or mental capabilities or lack of experience and knowledge, unless they are supervised or have been given instruction concerning the use of the appliance by a person responsible for their safety.
- Children should be supervised to ensure that they do not play with the appliance.
- If the supply cord is damaged, it must be replaced by the manufacturer, its service agent or similarly qualified persons in order to avoid a hazard.

WARNING: You must not cover this heater. Covering this heater presents fire risk and will activate the safety fuse; permanently disabling the unit.

WARNING: Do not use this heater in small rooms when they are occupied by persons not capable of leaving the room on their own, unless constant supervision is provided.

WARNING: To reduce the risk of fire, keep textiles, curtains, or any flammable material a minimum distance of 1 metre from the air outlet.

WARNING: In order to avoid overheating or fire, do not cover the heater.

- The heater must not be located immediately below a socket outlet.
- Do not use the heater if it has been dropped or damaged.
- Do not use if there are visible signs of damage to the heater.
- Ensure heater is on a flat, stable, heat-resistant surface.
- Do not use this appliance in the immediate surrounds of a bath, a shower, or a swimming pool or other liquids.
- Keep all objects at least 1 metre from the front and 150mm from the sides of the appliance.
- This appliance is intended for household use only and not for commercial or industrial use.
- Indoor use only.
- Use only the voltage specified on the rating label of the appliance.
- Use this appliance only as described in this manual. Any other use is not recommended by the manufacturer and may cause fire, electric shock or injury.
- The common cause of overheating is deposits of dust or fluff in the appliance. Ensure these deposits are removed regularly by unplugging the appliance and vacuum cleaning the air vents and grills.

General Care and Safety Guide

- **Never use the appliance to dry clothes.**
- Always unplug appliance when not in use.
- Do not connect the appliance to mains supply until completely assembled and adjusted.
- Ensure hands are dry before handling the plug or main unit.
- Do not operate with cord set coiled up as a heat build up is likely, which could be sufficient to become a hazard.
- Carry out regular checks of the supply cord to ensure no damage is evident
- Do not operate this appliance with a damaged cord, plug or after the appliance malfunctions or has been dropped or damaged in any manner. Return to a qualified electrical person for examination, electrical service or repair.
- Do not twist, kink or wrap the cord around the appliance, as this may cause the insulation to weaken and split. Always ensure that all cord has been removed from any cord storage area and is unrolled before use.
- It is recommended that this heater is plugged directly into the wall socket. Power boards are not rated to supply power to high wattage appliances.
- A correctly specified, undamaged extension cord may be used with this heater provided it is used in a safe manner.
- Do not remove plug from power socket until the appliance has been switched off.
- Do not remove plug from power socket by pulling cord; always grip plug.
- Do not place cord under carpet or cover with rugs or furniture. Arrange the cord so it cannot be tripped over.
- Don't place appliance on bedding or on thick & long carpet where the openings may get blocked.
- Switch off and use handle provided when moving
- Do not place appliance close to radiant heat source.
- Do not insert or allow foreign objects to enter any ventilation or exhaust opening, as this may cause an electric shock, fire or damage to the appliance.
- Do not sit on the appliance.
- Do not use abrasive cleaning products on this appliance. Clean with a damp cloth (not wet) rinsed in hot soapy water only. Always remove plug from the mains supply before cleaning.
- Do not operate in areas where petrol, paint or other flammable liquids are used or stored.
- The appliance must not be immersed in any liquids.
- There are no user serviceable parts installed in the unit.
- Do not place the unit in wardrobes or other enclosed spaces as this may cause fire hazards.
- This unit is not supposed to be used in or around locations where foodstuffs, works of art or delicate articles of science, etc. are stored.
- When the appliance has been unpacked, check it for transport damage and ensure all parts have been delivered. If parts are missing or the appliance has been damaged, contact the Customer Services Team.
- If your appliance does not work, or is not working properly, contact the place of purchase or the Customer Services Team.

Components



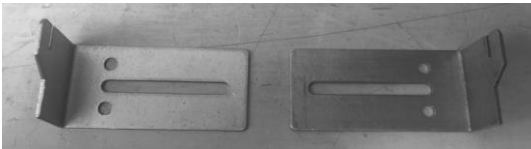
Main Body x1
Model N8PH50



Castor Plate and Castors x 2



Screw Pack



Wall Top Mounting Brackets



Wall Bottom Mounting Brackets

Assembly For Freestanding

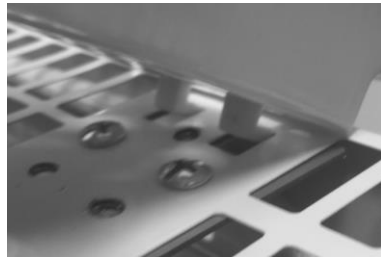
Before using this heater, it must either have the castor plates and casters fitted or be mounted to a wall.

PLEASE NOTE: 2 of the screws supplied are one way screws so once installed they cannot be removed.

- Each castor plate supplied with this heater (supplied separately in the carton) requires 3 screws to attach them securely to the heater. Mounting holes are pre-drilled in the base of the heater.
- Carefully turn the heater upside-down on a scratch-free and stable surface. Be careful to prevent damage to the cosmetic finish or your floor surfacing.
- Place the plastic lugs on the castor plate into the holes on the bottom of the heater rotate into position and secure them with the small screws provided.
- The castor plates come with 3 pre-drilled holes.
- Ensure you use 1 of the one way screws in each castor plate



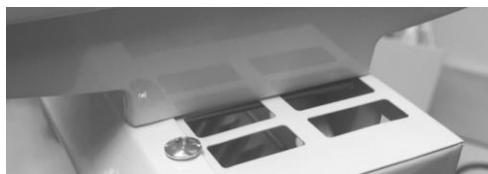
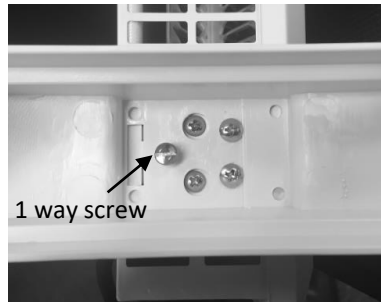
Castor plate showing lugs



Lugs positioned in bottom of heater



Bracket/Castor Mounting Screws
(3 per castor plate)

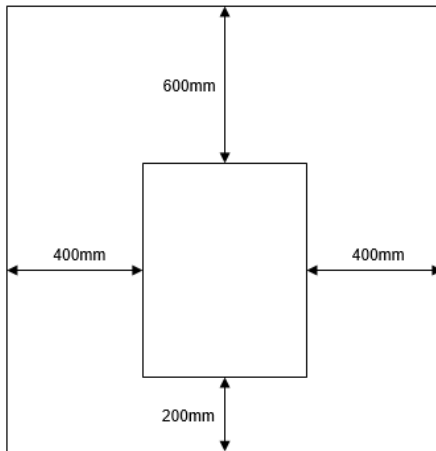


Castor plate securely positioned

Assembly For Wall Mounting

WALL MOUNTED HEATERS ARE ONLY TO BE MOUNTED ON WALLS THAT COMPLY WITH CURRENT AS/NZS SPECIFICATIONS & BUILDING REGULATIONS

- Position the panel heater within one metre of a wall socket. (Note the power cord comes out from the right hand side of the heater near the bottom)
- Do not run the power cord behind the heater
- Do not mount in front of or below the wall socket.
- Ensure the heater is mounted at least 200mm above the floor and at least 400mm from either side and 600mm from anything above the heater.



To fix the bracket and install the heater:

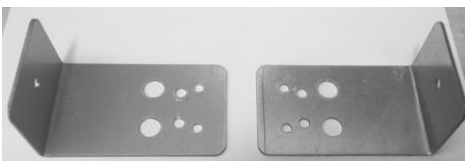
- First mark the wall where the heater will be installed taking into account safe distances around the heater as shown above.



Wall Mounting Brackets - Top



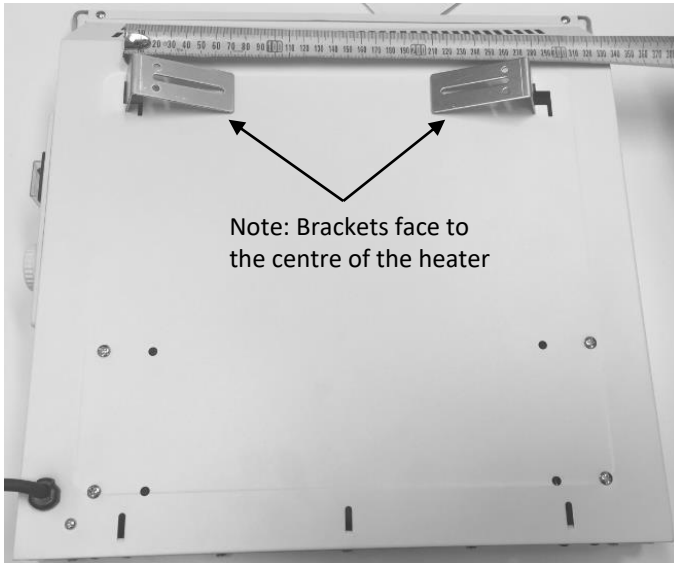
Wall Mounting Screw Set
With Plastic wall plugs



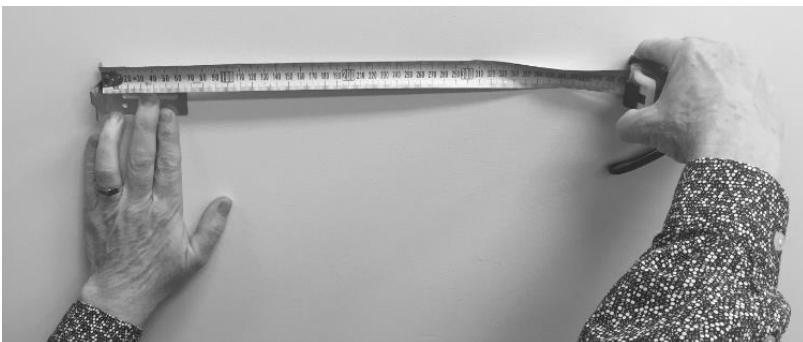
Wall Mounting Brackets - Bottom

Assembly For Wall Mounting cont.

- Measure the distance between the mounting slots on the back of the heater.
- The top wall mount brackets should be set so that they are hidden when the heater is installed.

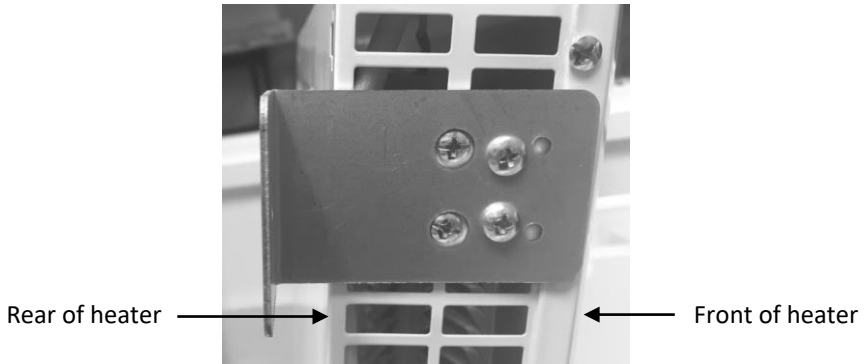


- Mount one of the top wall brackets to the wall so that it is in the right location to hold the heater.
- Next mount the other bracket to the wall in the correct position to locate the other slot in heater. Ensure they are level.
- Also ensure these brackets are firmly fastened to the wall.



Assembly For Wall Mounting cont.

- Secure the bottom wall mounting brackets to the bottom of the heater with the wall mounting part pointing down below the heater as shown below.
- These mount in the same position as the castor plates except they are only held by 2 screws.
- These brackets will hold the bottom of the heater the correct distance from the wall.



- Install the heater onto the top mounting brackets.
- Once the heater is installed, mark the locations for the bottom wall mounting brackets.
- Remove heater from wall and drill holes
- Reinstall the heater and secure to wall.

Operating Your Heater

Always choose a safe location for the appliance, keeping in mind the safety precautions outlined. Ensure all packaging has been removed from the unit before use. This appliance requires no installation, it should be used solely as a portable appliance.

WARNING: In order to avoid overheating or fire, do not cover the heater.

WARNING: Keep all objects at least 1 metre from the front and 150mm from the sides of the appliance.

WARNING: Do not use this heater with a programmer, separate timer, remote-control system or any other device that switches the heater on automatically, since a fire risk exists if the heater is covered or positioned incorrectly.

WARNING: Never leave this heater unattended when in use.

If mounted on castors, ensure heater is on a flat, stable, heat-resistant surface.

WALL MOUNTED HEATERS ARE ONLY TO BE MOUNTED ON WALLS THAT COMPLY WITH CURRENT AS/NZS SPECIFICATIONS & BUILDING REGULATIONS

Once the heater is in a safe operating position and all switches are in the off position, insert the power plug into the mains outlet.

CAUTION: Ensure the power cord is not tight because if pulled it may partially pull the plug from the socket. A partially inserted plug will overheat the plug and socket and could result in fire.

Operating Your Heater

HEATER CONTROL SWITCH

Check that the heat control switch is set to Off position before plugging the heater into the mains supply.

For greater economy, use the High Heat setting initially and then switch to the Low Heat setting.

The power switches are located on the right hand side of the heater below the control panel.

To turn the heater on, switch on the power switch to the heat setting desired.

To turn the heater off, switch off the power switches.

The control switch positions are:

0 = OFF

I = Low Heat

II = High Heat

THERMOSTATIC CONTROL

1. Rotate thermostat knob clockwise until you reach the maximum position.
2. When the room reaches a temperature that is comfortable for you, slowly turn the knob anti-clockwise until the heater just turns off (you will hear a click).
3. The heater will now cycle on and off to maintain the comfort level you have set.
4. Take note of this setting position for future use.



HEATER CONTROL SWITCH



THERMOSTAT

Operating Your Heater

SAFETY DEVICES

This appliance has two protection devices:

- Resettable Thermal Link - this will automatically disconnect the power to the appliance at a pre-set overheat temperature. After cooling down it will reset and power on again. If this occurs, investigate what is causing the appliance to overheat.
- Thermal Fuse - this disconnects the appliance permanently in case of overheating. (It is non resettable).

CAUTION: The heater generates heat during use. Proper precautions must be taken to prevent the risk of burns, scalds, fires or other damage to persons.

CARE AND CLEANING

- The heater requires regular cleaning to ensure trouble free operation:
- Unplug the heater from the mains supply before cleaning.
- Ensure that the heater has been allowed to cool down completely before cleaning.
- The common cause of overheating is deposits of dust or fluff in the appliance. Ensure these deposits are removed regularly by unplugging the appliance and vacuum cleaning the air vents and grills.
- Use a damp cloth (not wet) to wipe the exterior of the heater to remove dust and dirt.
- Never use solutions such as petrol, thinners or polishing agents.
- Ensure the heater is dry before plugging back into the mains supply.

PROOF OF PURCHASE

To receive warranty retain receipt as proof of purchase.

TECHNICAL SPECIFICATION

Model No: N8PH50
Supply: 220-240VAC 50Hz
Wattage: 500W IPX4

NUMBER
Good to Go.

8[®]

SUPPORT AND TECHNICAL ADVICE

North Shore City, Auckland, New Zealand

Monday – Friday 8am-5pm

Phone: 0800 232 633



ONE YEAR WARRANTY

Thank you for purchasing this Number 8 product. Your product is warranted against factory faults when used in a normal domestic setting for a period of one year from the date of purchase. Valid proof of purchase will be required. As the product is intended for home use only, commercial usage of this product for professional or industrial purposes will VOID this warranty.

Should your product be faulty, it may be replaced, repaired or refunded during the warranty period, as deemed appropriate by the retailer.

This warranty excludes damage caused by misuse, neglect, shipping accident, incorrect installation, or work carried out by anyone other than a qualified electrical service technician.

PLEASE KEEP YOUR RECEIPT AS THIS WILL HELP VERIFY YOUR WARRANTY.

This warranty is additional to the conditions and guarantees of the Consumers Guarantee Act (1993).

Number 8 – New Zealand
67 Corinthian Drive
Albany
Auckland 0632
New Zealand
Phone 0800 232 633

Number 8 One Year Warranty (IMPORTANT: Please complete and retain this warranty card)

Name

Address

Place Of Purchase

Date of Purchase

Name Of Product

Model Number

Attach a copy of the purchase receipt to this warranty card

Due to continual design improvements, the product illustrated in this User Manual may differ slightly from the actual product.